

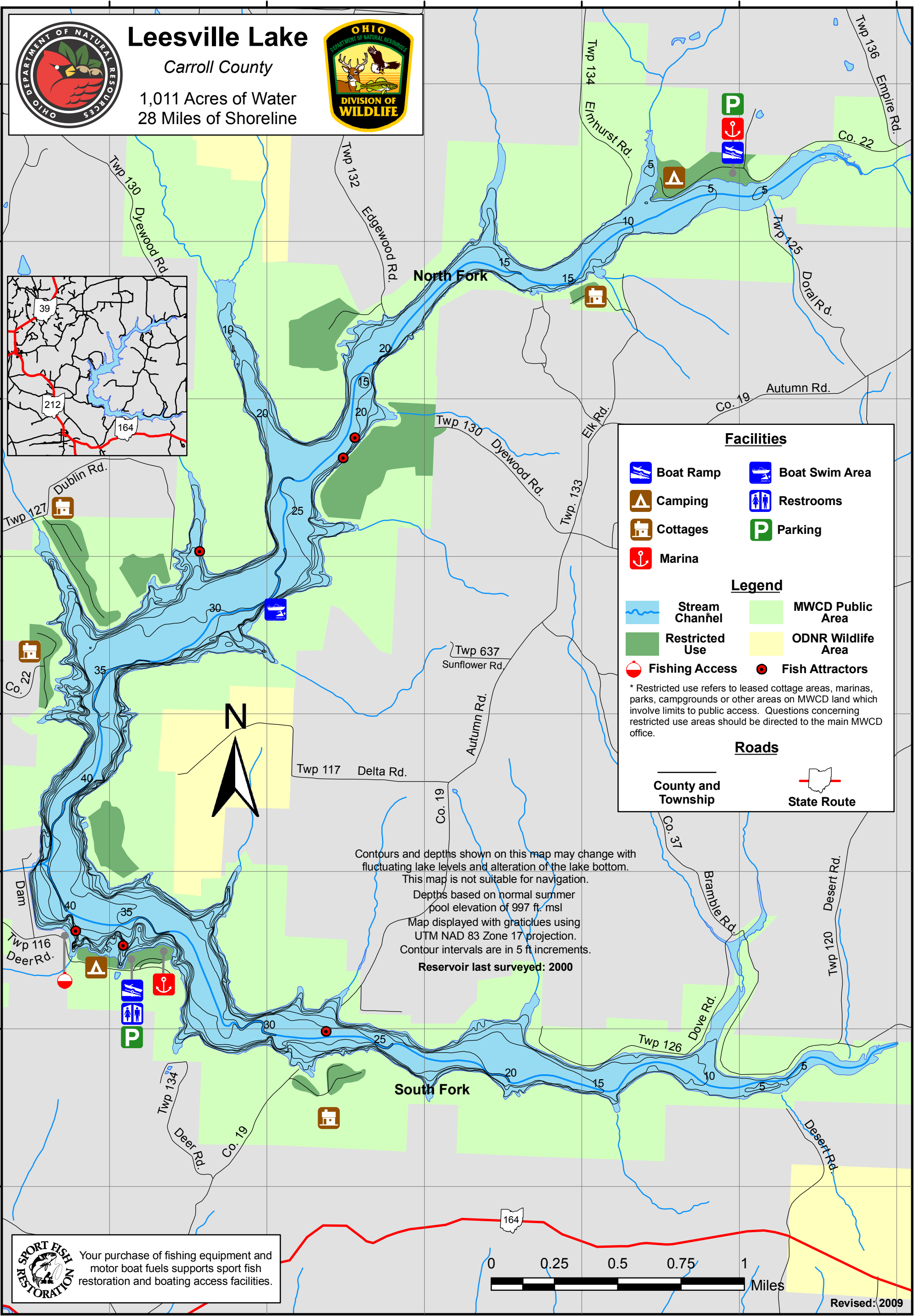
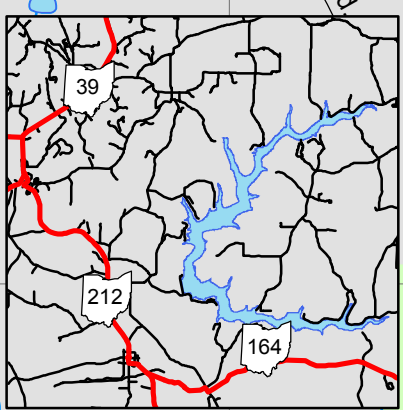
484000 485000 486000 487000 488000 489000

4485000  
4484000  
4483000  
4482000  
4481000  
4480000  
4479000  
4478000



# Leesville Lake

Carroll County  
1,011 Acres of Water  
28 Miles of Shoreline



**Facilities**

- Boat Ramp
- Camping
- Cottages
- Marina
- Boat Swim Area
- Restrooms
- Parking

**Legend**

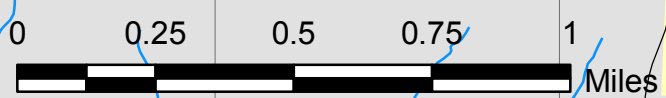
- Stream Channel
- Restricted Use
- Fishing Access
- MWCD Public Area
- ODNR Wildlife Area
- Fish Attractors

**Roads**

- County and Township
- State Route

Contours and depths shown on this map may change with fluctuating lake levels and alteration of the lake bottom. This map is not suitable for navigation. Depths based on normal summer pool elevation of 997 ft. msl. Map displayed with graticules using UTM NAD 83 Zone 17 projection. Contour intervals are in 5 ft increments. Reservoir last surveyed: 2000

**SPORT FISH RESTORATION**  
Your purchase of fishing equipment and motor boat fuels supports sport fish restoration and boating access facilities.



Revised: 2009

# Leesville Lake Fishing Map