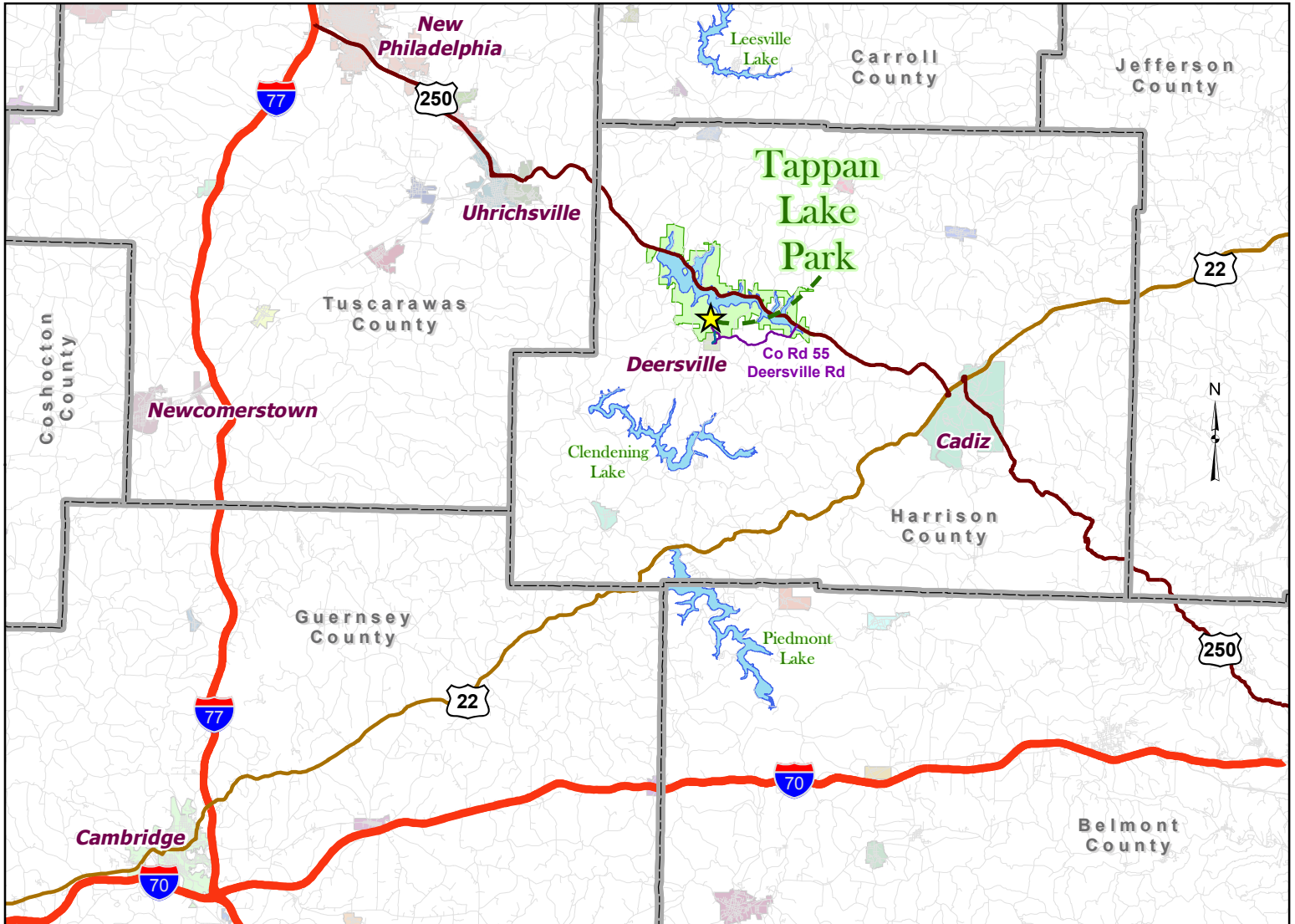


GPS Coordinates
for Tappan Lake Park
Entrance Gate:

-81° 11' 12.54" W Longitude
40° 19' 3.7" N Latitude

Tappan Lake Park
84000 Mallarnee Rd
Deersville, OH 44693
740-922-3649
www.mwcd.org



From Cleveland, OH:

- 1 - Follow I-77 South to Exit 81 to merge onto US-250 E toward Uhrichsville
Travel 10.0 miles
- 2 - Merge onto OH-800/US-250 E via the ramp to Cadiz/Dennison
Travel 1.6 miles
- 3 - Turn left at US-250 E
Travel 14.2 miles
- 4 - Turn right at Co Rd 55/Deersville Rd
Travel 1.8 miles
- 5 - Continue onto Co Rd 2/Deersville Ridge Rd
Travel 1.9 miles
- 6 - Turn right onto Tappan Lake Park Rd
Follow Tappan Lake Park Rd into Tappan Lake Park

From Columbus, OH:

- 1 - Follow I-70 East toward Wheeling
- 2 - Take exit 180 B to merge onto I-77 N toward Cleveland
Travel 21.3 miles
- 3 - Take exit 65 for US-36 toward Newcomerstown/Port Washington
- 4 - Turn right at US-36 E
Travel 14 miles
- 5 - Continue onto OH-800 S/US-250 E
Travel 1.4 miles
- 6 - Turn left at US-250 E
Travel 14.2 miles
- 7 - Turn right at Co Rd 55/Deersville Rd
Travel 1.8 miles
- 8 - Continue onto Co Rd 2/Deersville Ridge Rd
Travel 1.9 miles
- 9 - Turn right onto Tappan Lake Park Rd
Follow Tappan Lake Park Rd into Tappan Lake Park

From Pittsburgh, PA:

- 1 - Follow US-22 W/US-30 W toward Weirton
Travel 50.8 miles
- 2 - Take the US-250 W ramp to New Philadelphia/Tappan Lake Region
- 3 - Turn right at US-250 W/Cadiz-Dennison Rd /Deersville Ave
Travel 7.0 miles
- 4 - Turn left at Co Rd 55/Deersville Rd
Travel 1.8 miles
- 5 - Continue onto Co Rd 2/Deersville Ridge Rd
Travel 1.9 miles
- 6 - Turn right onto Tappan Lake Park Rd
Follow Tappan Lake Park Rd into Tappan Lake Park

Driving directions have not been verified.

Travel distances are approximate.

Maps shown are for informational purposes only.

