

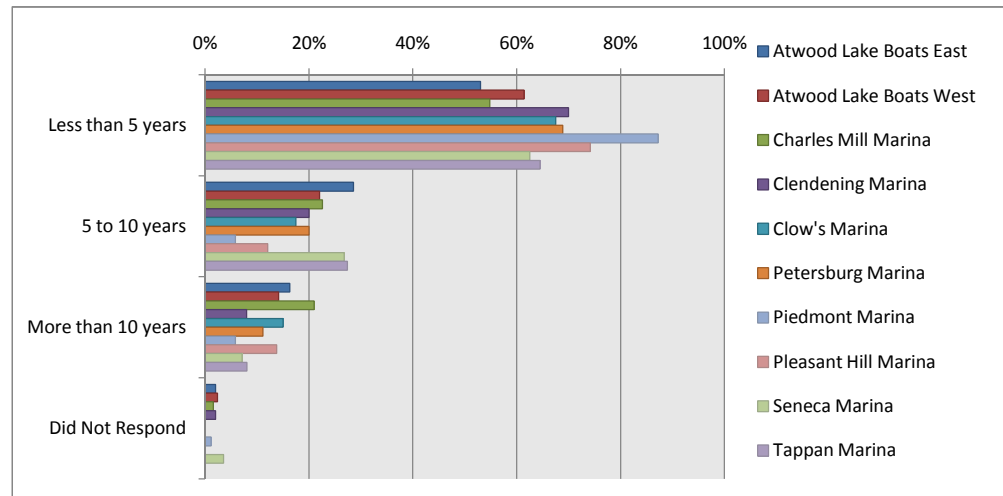
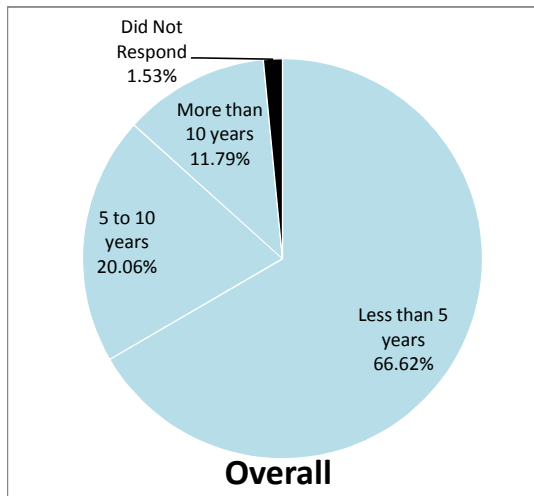
# DOCKERS

# Overall Summary

Surveys sent: 2901  
 Surveys returned: 653 22.51%

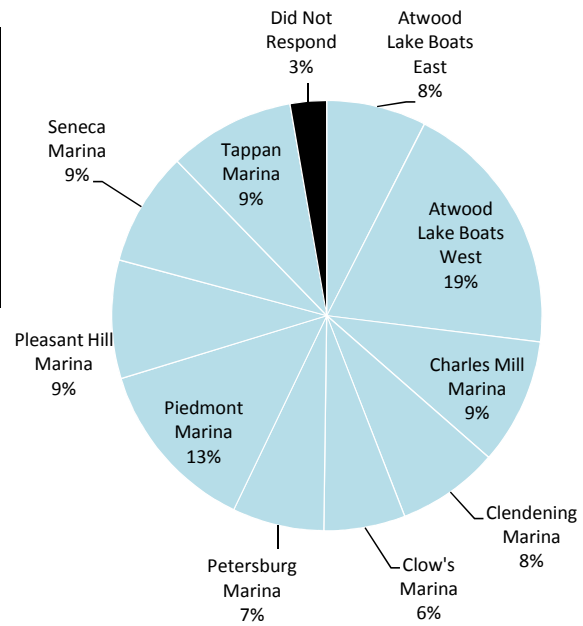
## Q1. How long have you participated in recreational boating?

	Atwood Lake Boats East		Atwood Lake Boats West		Charles Mill Marina		Clendening Marina		Clow's Marina		Petersburg Marina		Piedmont Marina		Pleasant Hill Marina		Seneca Marina		Tappan Marina		Unknown		Overall	
Less than 5 years	26	53.06%	78	61.42%	34	54.84%	35	70.00%	27	67.50%	31	68.89%	75	87.21%	43	74.14%	35	62.50%	40	64.52%	11	61.11%	435	66.62%
5 to 10 years	14	28.57%	28	22.05%	14	22.58%	10	20.00%	7	17.50%	9	20.00%	5	5.81%	7	12.07%	15	26.79%	17	27.42%	5	27.78%	131	20.06%
More than 10 years	8	16.33%	18	14.17%	13	20.97%	4	8.00%	6	15.00%	5	11.11%	5	5.81%	8	13.79%	4	7.14%	5	8.06%	1	5.56%	77	11.79%
Did Not Respond	1	2.04%	3	2.36%	1	1.61%	1	2.00%	0	0.00%	0	0.00%	1	1.16%	0	0.00%	2	3.57%	0	0.00%	1	5.56%	10	1.53%



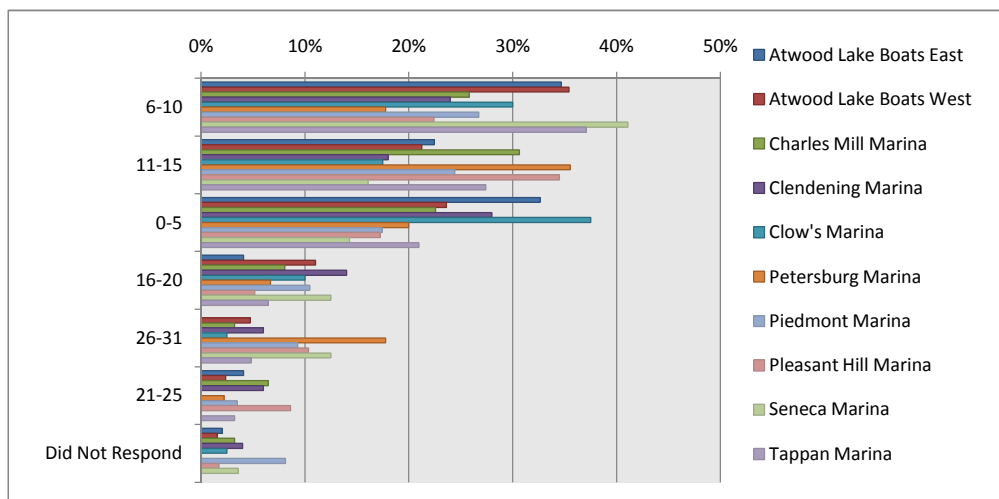
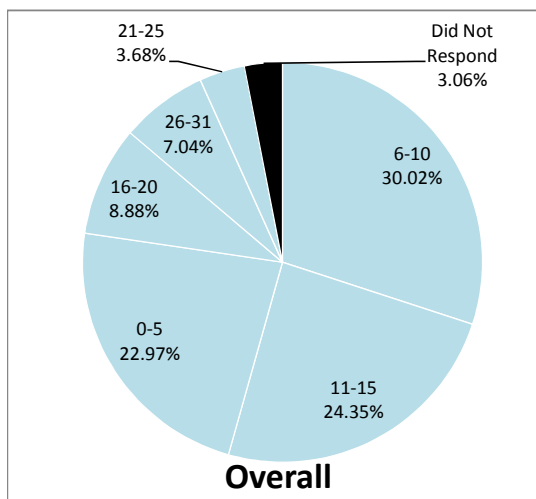
Q2. At which marina is your boat docked?

Atwood Lake Boats East	49	7.50%
Atwood Lake Boats West	127	19.45%
Charles Mill Marina	62	9.49%
Clendening Marina	50	7.66%
Leesville Clow's Marina	40	6.13%
Leesville Petersburg Marina	45	6.89%
Piedmont Marina	86	13.17%
Pleasant Hill Marina	58	8.88%
Seneca Marina	56	8.58%
Tappan Marina	62	9.49%
Did Not Respond	18	2.76%



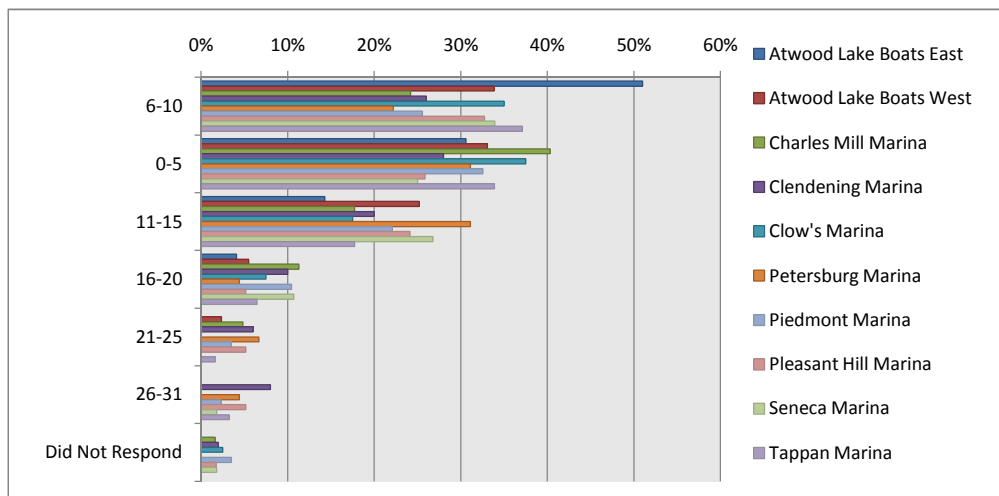
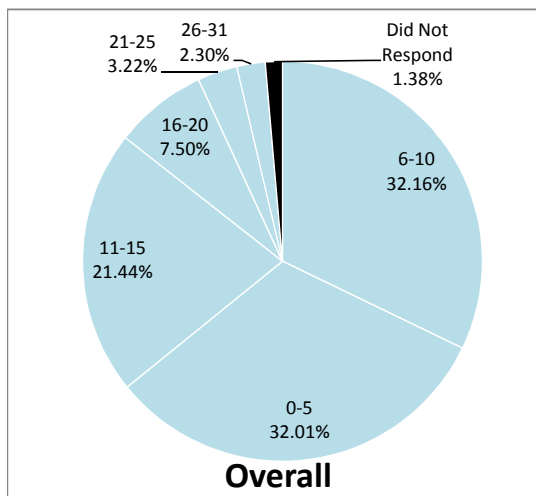
**Q3. During the boating season (May-Oct.), how many days per month are you present at the marina?**

	Atwood Lake Boats East		Atwood Lake Boats West		Charles Mill Marina		Clendening Marina		Clow's Marina		Petersburg Marina		Piedmont Marina		Pleasant Hill Marina		Seneca Marina		Tappan Marina		Unknown		Overall	
6-10	17	34.69%	45	35.43%	16	25.81%	12	24.00%	12	30.00%	8	17.78%	23	26.74%	13	22.41%	23	41.07%	23	37.10%	4	22.22%	196	30.02%
11-15	11	22.45%	27	21.26%	19	30.65%	9	18.00%	7	17.50%	16	35.56%	21	24.42%	20	34.48%	9	16.07%	17	27.42%	3	16.67%	159	24.35%
0-5	16	32.65%	30	23.62%	14	22.58%	14	28.00%	15	37.50%	9	20.00%	15	17.44%	10	17.24%	8	14.29%	13	20.97%	6	33.33%	150	22.97%
16-20	2	4.08%	14	11.02%	5	8.06%	7	14.00%	4	10.00%	3	6.67%	9	10.47%	3	5.17%	7	12.50%	4	6.45%	0	0.00%	58	8.88%
26-31	0	0.00%	6	4.72%	2	3.23%	3	6.00%	1	2.50%	8	17.78%	8	9.30%	6	10.34%	7	12.50%	3	4.84%	2	11.11%	46	7.04%
21-25	2	4.08%	3	2.36%	4	6.45%	3	6.00%	0	0.00%	1	2.22%	3	3.49%	5	8.62%	0	0.00%	2	3.23%	1	5.56%	24	3.68%
Did Not Respond	1	2.04%	2	1.57%	2	3.23%	2	4.00%	1	2.50%	0	0.00%	7	8.14%	1	1.72%	2	3.57%	0	0.00%	2	11.11%	20	3.06%



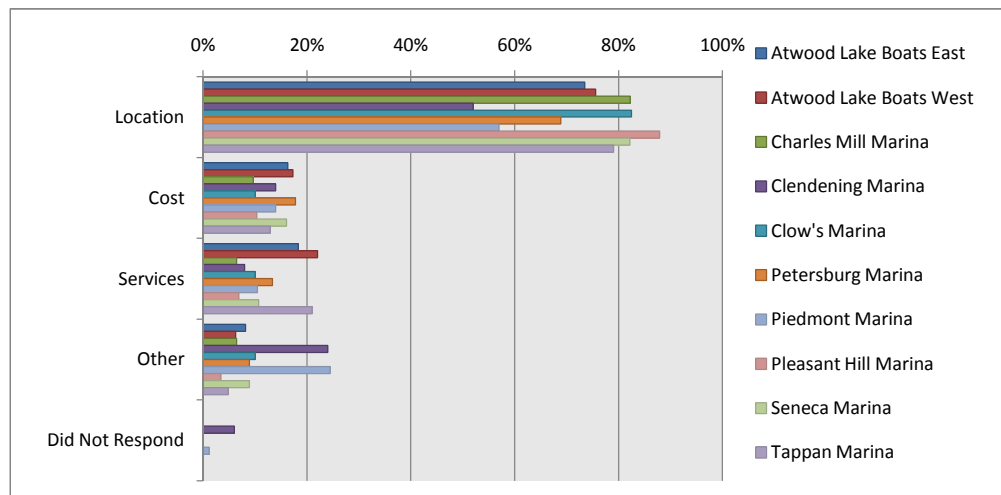
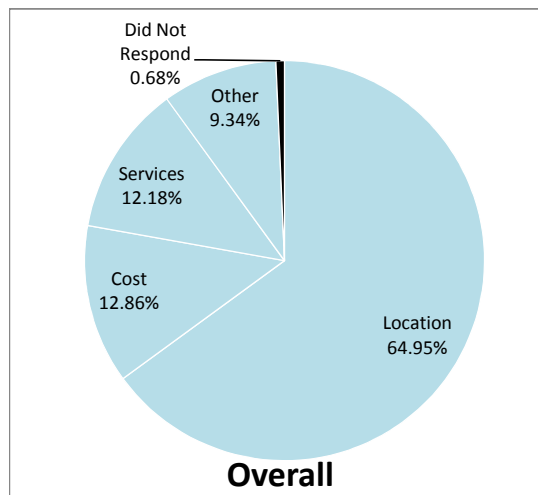
**Q4. How many times do you take your boat out on the water each month?**

	Atwood Lake Boats East	Atwood Lake Boats West	Charles Mill Marina	Clendening Marina	Clow's Marina	Petersburg Marina	Piedmont Marina	Pleasant Hill Marina	Seneca Marina	Tappan Marina	Unknown	Overall
6-10	25 51.02%	43 33.86%	15 24.19%	13 26.00%	14 35.00%	10 22.22%	22 25.58%	19 32.76%	19 33.93%	23 37.10%	7 38.89%	210 32.16%
0-5	15 30.61%	42 33.07%	25 40.32%	14 28.00%	15 37.50%	14 31.11%	28 32.56%	15 25.86%	14 25.00%	21 33.87%	6 33.33%	209 32.01%
11-15	7 14.29%	32 25.20%	11 17.74%	10 20.00%	7 17.50%	14 31.11%	19 22.09%	14 24.14%	15 26.79%	11 17.74%	0 0.00%	140 21.44%
16-20	2 4.08%	7 5.51%	7 11.29%	5 10.00%	3 7.50%	2 4.44%	9 10.47%	3 5.17%	6 10.71%	4 6.45%	1 5.56%	49 7.50%
21-25	0 0.00%	3 2.36%	3 4.84%	3 6.00%	0 0.00%	3 6.67%	3 3.49%	3 5.17%	0 0.00%	1 1.61%	2 11.11%	21 3.22%
26-31	0 0.00%	0 0.00%	0 0.00%	4 8.00%	0 0.00%	2 4.44%	2 2.33%	3 5.17%	1 1.79%	2 3.23%	1 5.56%	15 2.30%
Did Not Respond	0 0.00%	0 0.00%	1 1.61%	1 2.00%	1 2.50%	0 0.00%	3 3.49%	1 1.72%	1 1.79%	0 0.00%	1 5.56%	9 1.38%



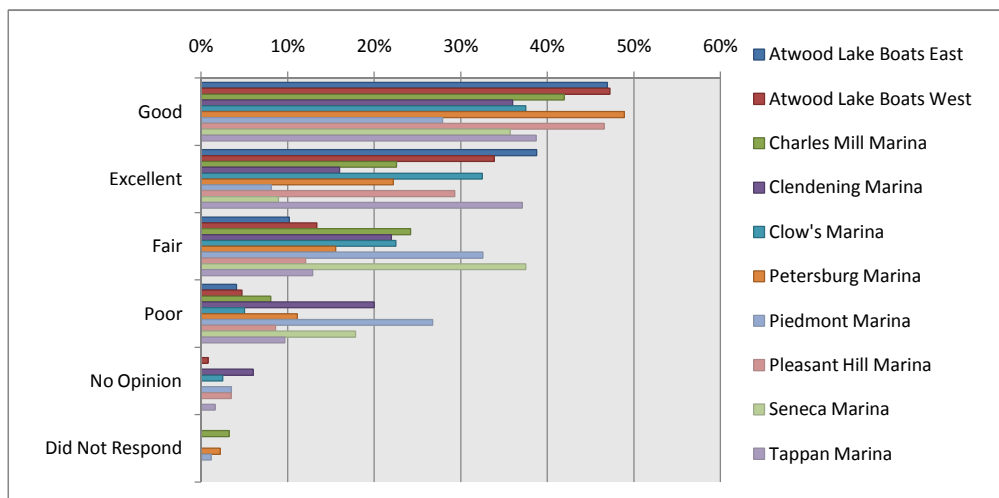
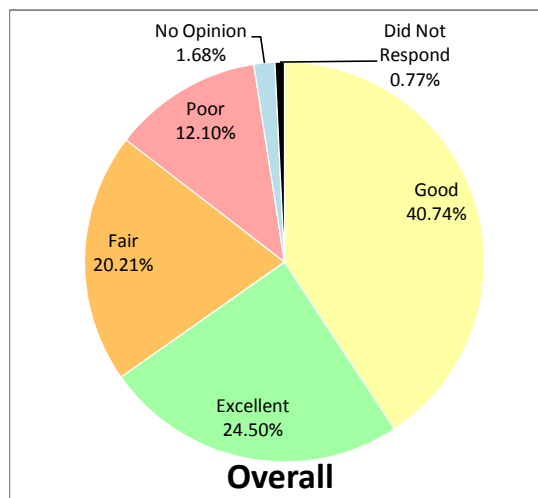
**Q5. What is the most important consideration for you in selection of your marina? (Multiple Choice)**

	Atwood Lake Boats East		Atwood Lake Boats West		Charles Mill Marina		Clendening Marina		Clow's Marina		Petersburg Marina		Piedmont Marina		Pleasant Hill Marina		Seneca Marina		Tappan Marina		Unknown		Overall	
Location	36	73.47%	96	75.59%	51	82.26%	26	52.00%	33	82.50%	31	68.89%	49	56.98%	51	87.93%	46	82.14%	49	79.03%	12	66.67%	480	73.51%
Cost	8	16.33%	22	17.32%	6	9.68%	7	14.00%	4	10.00%	8	17.78%	12	13.95%	6	10.34%	9	16.07%	8	12.90%	5	27.78%	95	14.55%
Services	9	18.37%	28	22.05%	4	6.45%	4	8.00%	4	10.00%	6	13.33%	9	10.47%	4	6.90%	6	10.71%	13	20.97%	3	16.67%	90	13.78%
Other	4	8.16%	8	6.30%	4	6.45%	12	24.00%	4	10.00%	4	8.89%	21	24.42%	2	3.45%	5	8.93%	3	4.84%	2	11.11%	69	10.57%
Did Not Respond	0	0.00%	0	0.00%	0	0.00%	3	6.00%	0	0.00%	0	0.00%	1	1.16%	0	0.00%	0	0.00%	0	0.00%	1	5.56%	5	0.77%



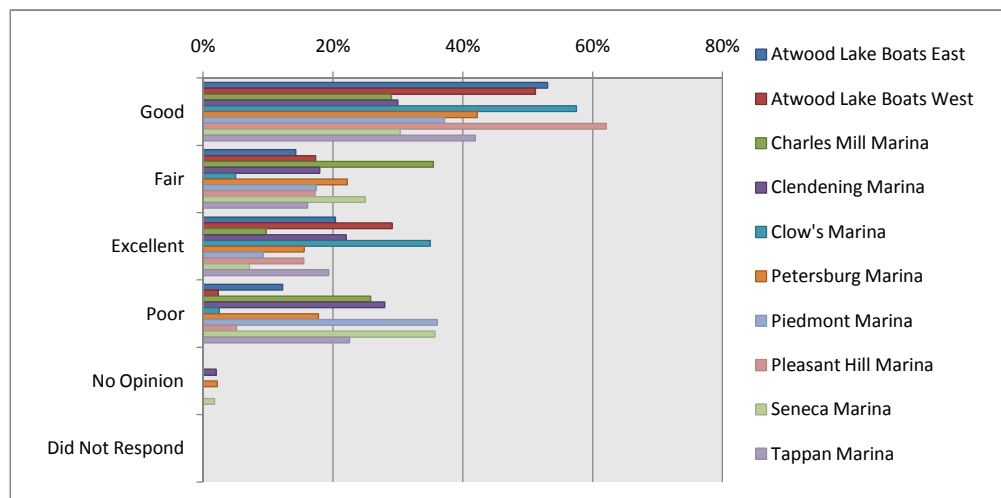
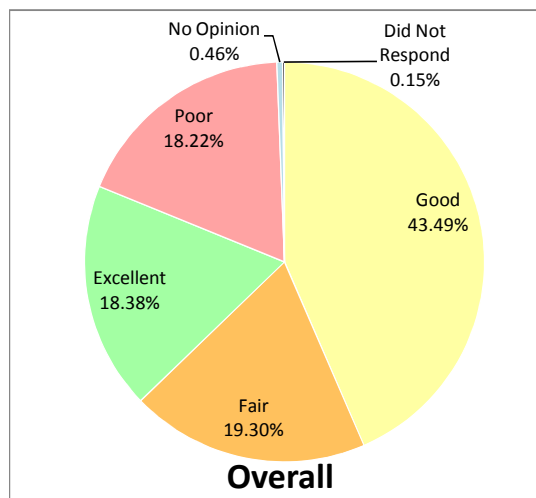
**Q6. How do you rate safety and security at the marina?**

	Atwood Lake Boats East	Atwood Lake Boats West	Charles Mill Marina	Clendening Marina	Clow's Marina	Petersburg Marina	Piedmont Marina	Pleasant Hill Marina	Seneca Marina	Tappan Marina	Unknown	Overall
Good	23 46.94%	60 47.24%	26 41.94%	18 36.00%	15 37.50%	22 48.89%	24 27.91%	27 46.55%	20 35.71%	24 38.71%	7 38.89%	266 40.74%
Excellent	19 38.78%	43 33.86%	14 22.58%	8 16.00%	13 32.50%	10 22.22%	7 8.14%	17 29.31%	5 8.93%	23 37.10%	1 5.56%	160 24.50%
Fair	5 10.20%	17 13.39%	15 24.19%	11 22.00%	9 22.50%	7 15.56%	28 32.56%	7 12.07%	21 37.50%	8 12.90%	4 22.22%	132 20.21%
Poor	2 4.08%	6 4.72%	5 8.06%	10 20.00%	2 5.00%	5 11.11%	23 26.74%	5 8.62%	10 17.86%	6 9.68%	5 27.78%	79 12.10%
No Opinion	0 0.00%	1 0.79%	0 0.00%	3 6.00%	1 2.50%	0 0.00%	3 3.49%	2 3.45%	0 0.00%	1 1.61%	0 0.00%	11 1.68%
Did Not Respond	0 0.00%	0 0.00%	2 3.23%	0 0.00%	0 0.00%	1 2.22%	1 1.16%	0 0.00%	0 0.00%	0 0.00%	1 5.56%	5 0.77%



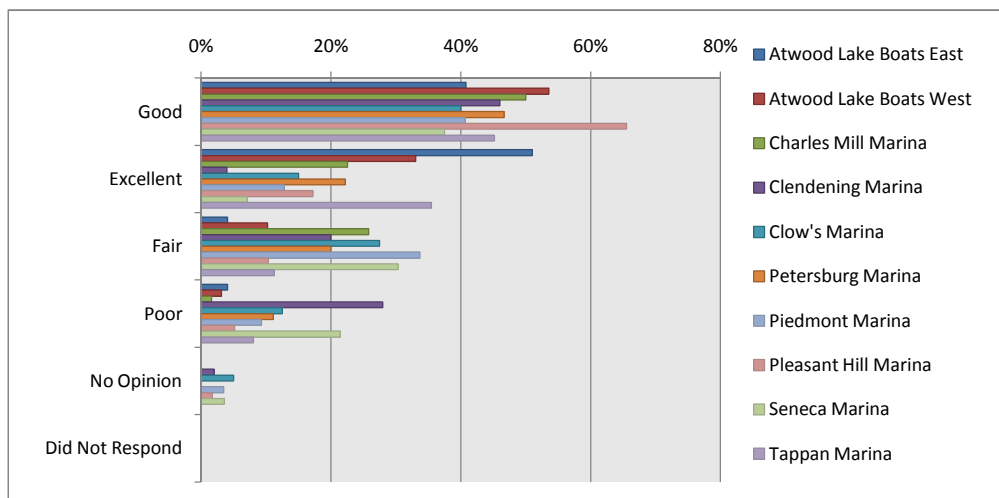
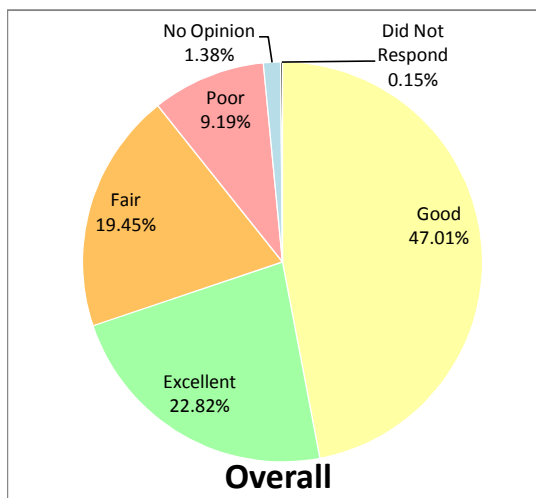
**Q7. How do you rate condition/stability of the docks at the marina?**

	Atwood Lake Boats East		Atwood Lake Boats West		Charles Mill Marina		Clendening Marina		Clow's Marina		Petersburg Marina		Piedmont Marina		Pleasant Hill Marina		Seneca Marina		Tappan Marina		Unknown		Overall	
Good	26	53.06%	65	51.18%	18	29.03%	15	30.00%	23	57.50%	19	42.22%	32	37.21%	36	62.07%	17	30.36%	26	41.94%	7	38.89%	284	43.49%
Fair	7	14.29%	22	17.32%	22	35.48%	9	18.00%	2	5.00%	10	22.22%	15	17.44%	10	17.24%	14	25.00%	10	16.13%	5	27.78%	126	19.30%
Excellent	10	20.41%	37	29.13%	6	9.68%	11	22.00%	14	35.00%	7	15.56%	8	9.30%	9	15.52%	4	7.14%	12	19.35%	2	11.11%	120	18.38%
Poor	6	12.24%	3	2.36%	16	25.81%	14	28.00%	1	2.50%	8	17.78%	31	36.05%	3	5.17%	20	35.71%	14	22.58%	3	16.67%	119	18.22%
No Opinion	0	0.00%	0	0.00%	0	0.00%	1	2.00%	0	0.00%	1	2.22%	0	0.00%	0	0.00%	1	1.79%	0	0.00%	0	0.00%	3	0.46%
Did Not Respond	0	0.00%	0	0.00%	0	0.00%	0	0.00%	0	0.00%	0	0.00%	0	0.00%	0	0.00%	0	0.00%	0	0.00%	1	5.56%	1	0.15%



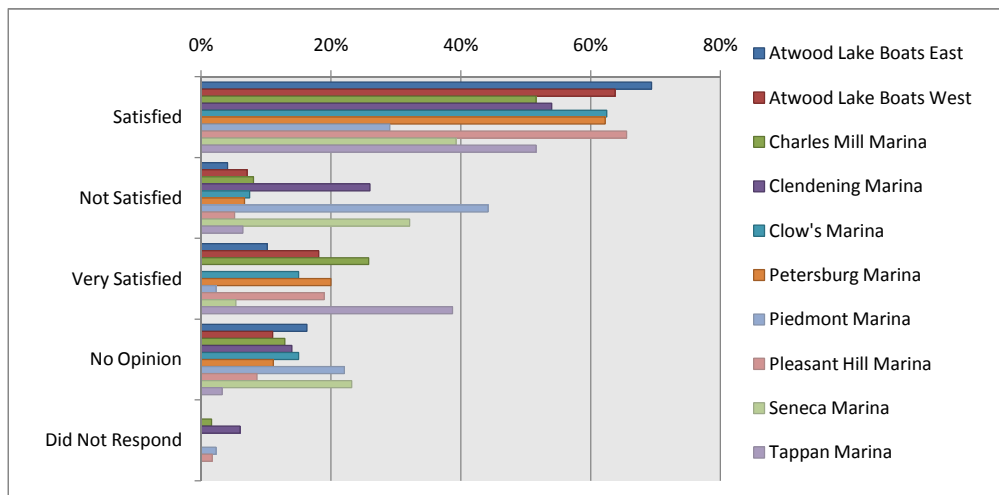
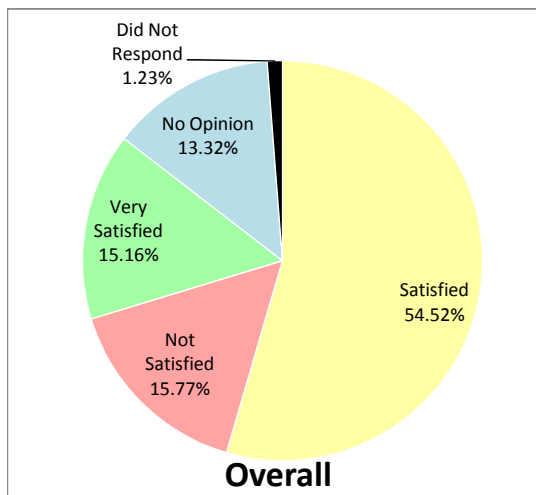
**Q8. How do you rate cleanliness and condition of the facilities at the marina?**

	Atwood Lake Boats East		Atwood Lake Boats West		Charles Mill Marina		Clendening Marina		Clow's Marina		Petersburg Marina		Piedmont Marina		Pleasant Hill Marina		Seneca Marina		Tappan Marina		Unknown		Overall	
Good	20	40.82%	68	53.54%	31	50.00%	23	46.00%	16	40.00%	21	46.67%	35	40.70%	38	65.52%	21	37.50%	28	45.16%	6	33.33%	307	47.01%
Excellent	25	51.02%	42	33.07%	14	22.58%	2	4.00%	6	15.00%	10	22.22%	11	12.79%	10	17.24%	4	7.14%	22	35.48%	3	16.67%	149	22.82%
Fair	2	4.08%	13	10.24%	16	25.81%	10	20.00%	11	27.50%	9	20.00%	29	33.72%	6	10.34%	17	30.36%	7	11.29%	7	38.89%	127	19.45%
Poor	2	4.08%	4	3.15%	1	1.61%	14	28.00%	5	12.50%	5	11.11%	8	9.30%	3	5.17%	12	21.43%	5	8.06%	1	5.56%	60	9.19%
No Opinion	0	0.00%	0	0.00%	0	0.00%	1	2.00%	2	5.00%	0	0.00%	3	3.49%	1	1.72%	2	3.57%	0	0.00%	0	0.00%	9	1.38%
Did Not Respond	0	0.00%	0	0.00%	0	0.00%	0	0.00%	0	0.00%	0	0.00%	0	0.00%	0	0.00%	0	0.00%	0	0.00%	1	5.56%	1	0.15%



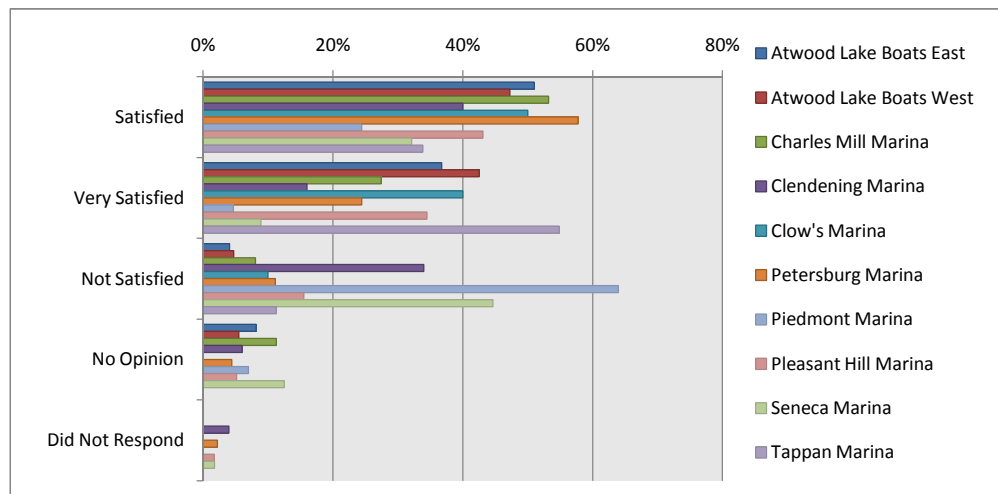
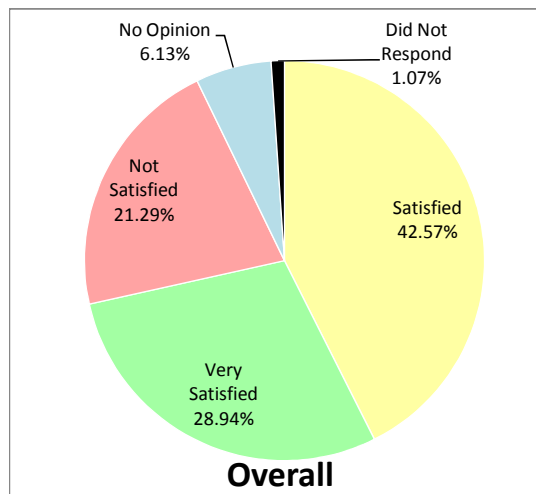
**Q9. Are you satisfied with the products offered for sale at your marina?**

	Atwood Lake Boats East		Atwood Lake Boats West		Charles Mill Marina		Clendening Marina		Clow's Marina		Petersburg Marina		Piedmont Marina		Pleasant Hill Marina		Seneca Marina		Tappan Marina		Unknown		Overall	
Satisfied	34	69.39%	81	63.78%	32	51.61%	27	54.00%	25	62.50%	28	62.22%	25	29.07%	38	65.52%	22	39.29%	32	51.61%	12	66.67%	356	54.52%
Not Satisfied	2	4.08%	9	7.09%	5	8.06%	13	26.00%	3	7.50%	3	6.67%	38	44.19%	3	5.17%	18	32.14%	4	6.45%	5	27.78%	103	15.77%
Very Satisfied	5	10.20%	23	18.11%	16	25.81%	0	0.00%	6	15.00%	9	20.00%	2	2.33%	11	18.97%	3	5.36%	24	38.71%	0	0.00%	99	15.16%
No Opinion	8	16.33%	14	11.02%	8	12.90%	7	14.00%	6	15.00%	5	11.11%	19	22.09%	5	8.62%	13	23.21%	2	3.23%	0	0.00%	87	13.32%
Did Not Respond	0	0.00%	0	0.00%	1	1.61%	3	6.00%	0	0.00%	0	0.00%	2	2.33%	1	1.72%	0	0.00%	0	0.00%	1	5.56%	8	1.23%



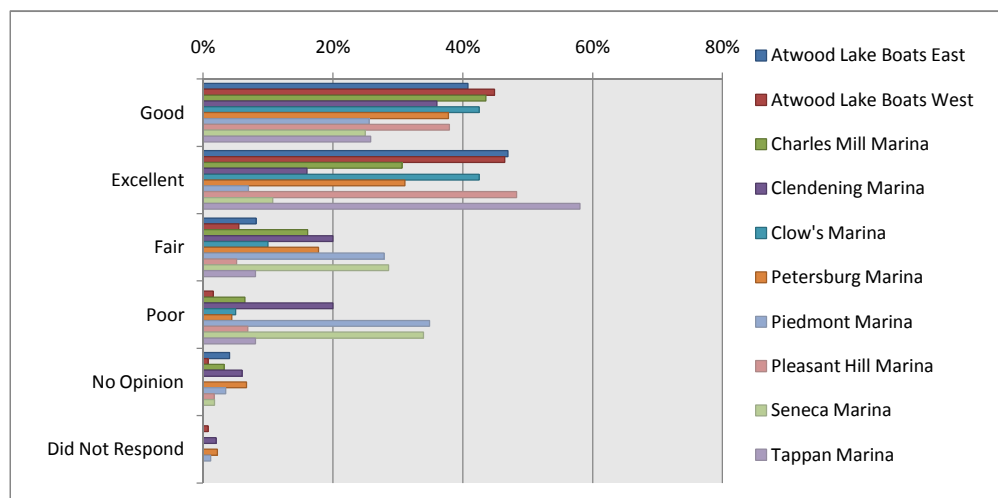
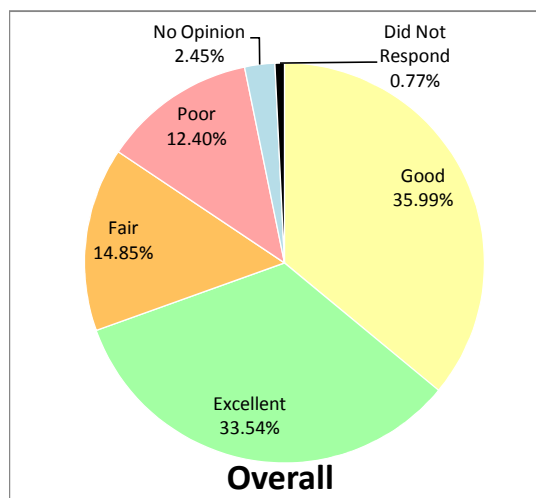
**Q10. Are you satisfied with the service your marina provides?**

	Atwood Lake Boats East	Atwood Lake Boats West	Charles Mill Marina	Clendening Marina	Clow's Marina	Petersburg Marina	Piedmont Marina	Pleasant Hill Marina	Seneca Marina	Tappan Marina	Unknown	Overall
Satisfied	25 51.02%	60 47.24%	33 53.23%	20 40.00%	20 50.00%	26 57.78%	21 24.42%	25 43.10%	18 32.14%	21 33.87%	9 50.00%	278 42.57%
Very Satisfied	18 36.73%	54 42.52%	17 27.42%	8 16.00%	16 40.00%	11 24.44%	4 4.65%	20 34.48%	5 8.93%	34 54.84%	2 11.11%	189 28.94%
Not Satisfied	2 4.08%	6 4.72%	5 8.06%	17 34.00%	4 10.00%	5 11.11%	55 63.95%	9 15.52%	25 44.64%	7 11.29%	4 22.22%	139 21.29%
No Opinion	4 8.16%	7 5.51%	7 11.29%	3 6.00%	0 0.00%	2 4.44%	6 6.98%	3 5.17%	7 12.50%	0 0.00%	1 5.56%	40 6.13%
Did Not Respond	0 0.00%	0 0.00%	0 0.00%	2 4.00%	0 0.00%	1 2.22%	0 0.00%	1 1.72%	1 1.79%	0 0.00%	2 11.11%	7 1.07%



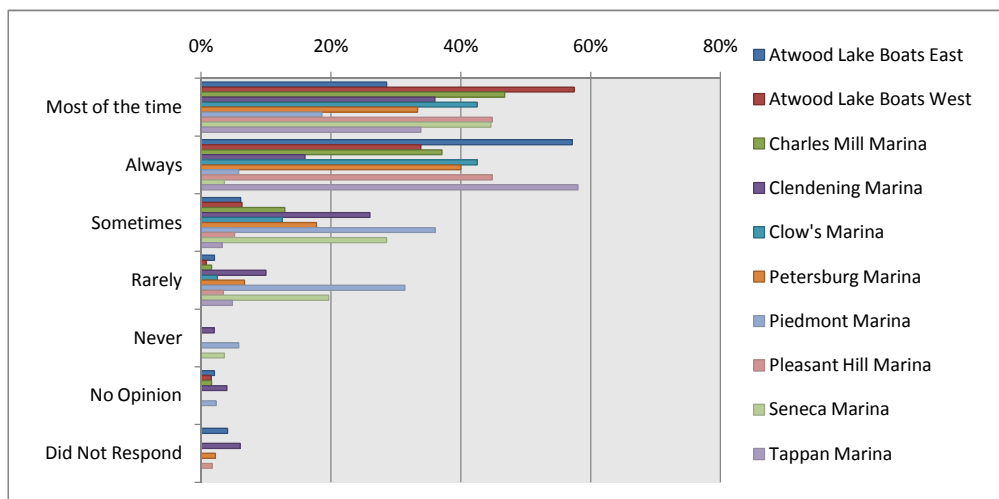
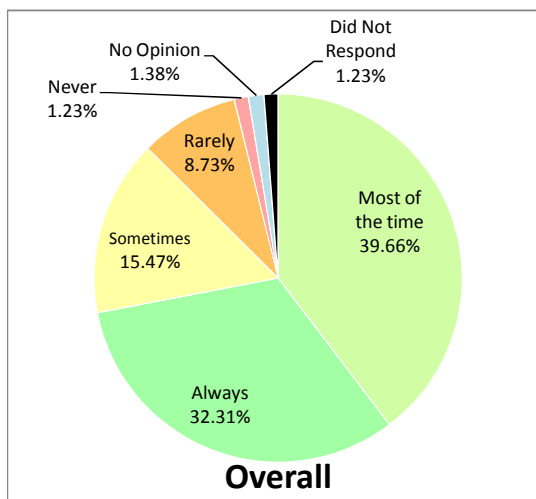
**Q11. Overall customer service at the marina.**

	Atwood Lake Boats East		Atwood Lake Boats West		Charles Mill Marina		Clendening Marina		Clow's Marina		Petersburg Marina		Piedmont Marina		Pleasant Hill Marina		Seneca Marina		Tappan Marina		Unknown		Overall	
Good	20	40.82%	57	44.88%	27	43.55%	18	36.00%	17	42.50%	17	37.78%	22	25.58%	22	37.93%	14	25.00%	16	25.81%	5	27.78%	235	35.99%
Excellent	23	46.94%	59	46.46%	19	30.65%	8	16.00%	17	42.50%	14	31.11%	6	6.98%	28	48.28%	6	10.71%	36	58.06%	3	16.67%	219	33.54%
Fair	4	8.16%	7	5.51%	10	16.13%	10	20.00%	4	10.00%	8	17.78%	24	27.91%	3	5.17%	16	28.57%	5	8.06%	6	33.33%	97	14.85%
Poor	0	0.00%	2	1.57%	4	6.45%	10	20.00%	2	5.00%	2	4.44%	30	34.88%	4	6.90%	19	33.93%	5	8.06%	3	16.67%	81	12.40%
No Opinion	2	4.08%	1	0.79%	2	3.23%	3	6.00%	0	0.00%	3	6.67%	3	3.49%	1	1.72%	1	1.79%	0	0.00%	0	0.00%	16	2.45%
Did Not Respond	0	0.00%	1	0.79%	0	0.00%	1	2.00%	0	0.00%	1	2.22%	1	1.16%	0	0.00%	0	0.00%	0	0.00%	1	5.56%	5	0.77%



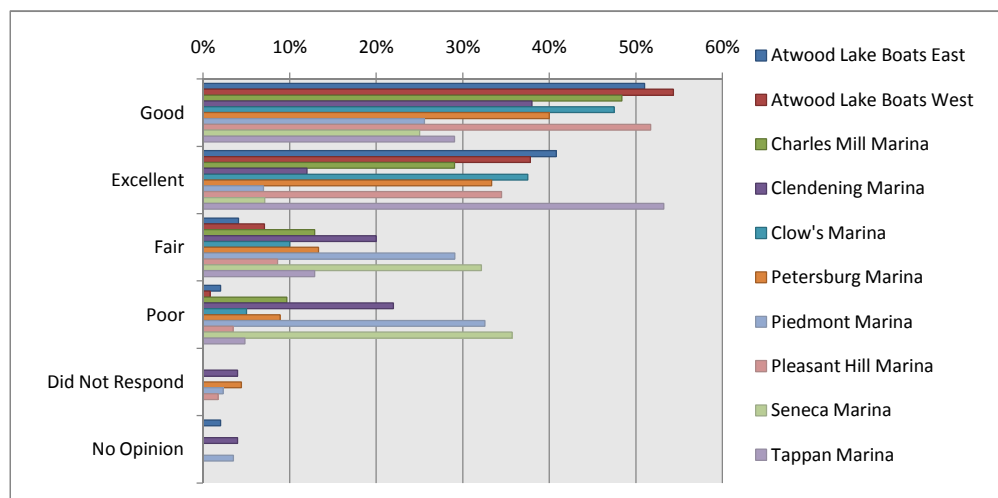
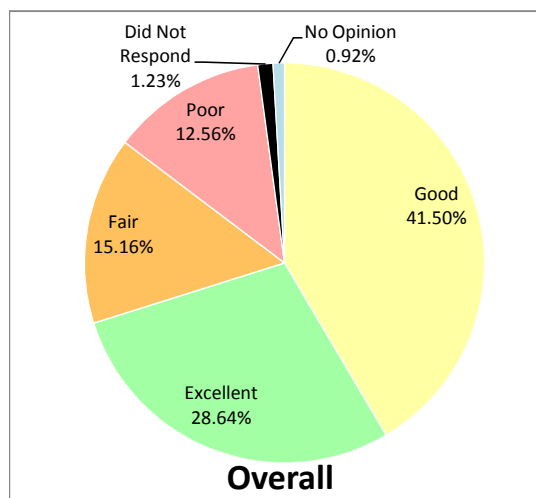
**Q12. Are marina staff available when you need them?**

	Atwood Lake Boats East	Atwood Lake Boats West	Charles Mill Marina	Clendening Marina	Clow's Marina	Petersburg Marina	Piedmont Marina	Pleasant Hill Marina	Seneca Marina	Tappan Marina	Unknown	Overall
Most of the time	14 28.57%	73 57.48%	29 46.77%	18 36.00%	17 42.50%	15 33.33%	16 18.60%	26 44.83%	25 44.64%	21 33.87%	5 27.78%	259 39.66%
Always	28 57.14%	43 33.86%	23 37.10%	8 16.00%	17 42.50%	18 40.00%	5 5.81%	26 44.83%	2 3.57%	36 58.06%	5 27.78%	211 32.31%
Sometimes	3 6.12%	8 6.30%	8 12.90%	13 26.00%	5 12.50%	8 17.78%	31 36.05%	3 5.17%	16 28.57%	2 3.23%	4 22.22%	101 15.47%
Rarely	1 2.04%	1 0.79%	1 1.61%	5 10.00%	1 2.50%	3 6.67%	27 31.40%	2 3.45%	11 19.64%	3 4.84%	2 11.11%	57 8.73%
Never	0 0.00%	0 0.00%	0 0.00%	1 2.00%	0 0.00%	0 0.00%	5 5.81%	0 0.00%	2 3.57%	0 0.00%	0 0.00%	8 1.23%
No Opinion	1 2.04%	2 1.57%	1 1.61%	2 4.00%	0 0.00%	0 0.00%	2 2.33%	0 0.00%	0 0.00%	0 0.00%	1 5.56%	9 1.38%
Did Not Respond	2 4.08%	0 0.00%	0 0.00%	3 6.00%	0 0.00%	1 2.22%	0 0.00%	1 1.72%	0 0.00%	0 0.00%	1 5.56%	8 1.23%



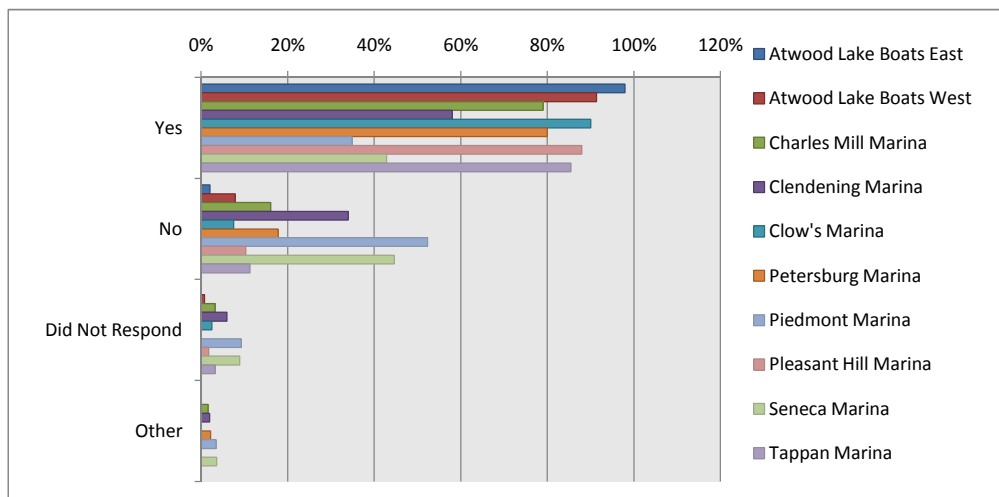
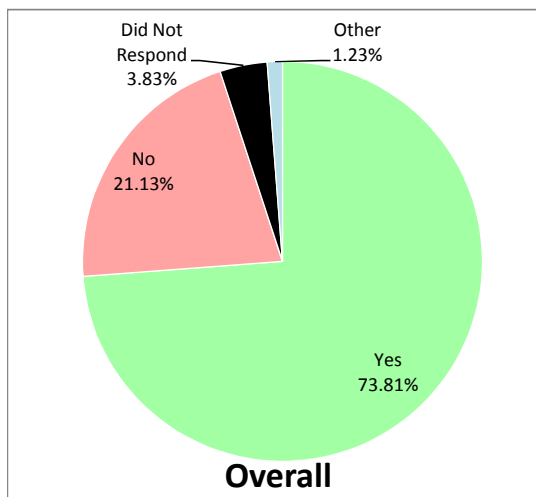
**Q13. How do you rate your overall experience at your marina?**

	Atwood Lake Boats East	Atwood Lake Boats West	Charles Mill Marina	Clendening Marina	Clow's Marina	Petersburg Marina	Piedmont Marina	Pleasant Hill Marina	Seneca Marina	Tappan Marina	Unknown	Overall
Good	25 51.02%	69 54.33%	30 48.39%	19 38.00%	19 47.50%	18 40.00%	22 25.58%	30 51.72%	14 25.00%	18 29.03%	7 38.89%	271 41.50%
Excellent	20 40.82%	48 37.80%	18 29.03%	6 12.00%	15 37.50%	15 33.33%	6 6.98%	20 34.48%	4 7.14%	33 53.23%	2 11.11%	187 28.64%
Fair	2 4.08%	9 7.09%	8 12.90%	10 20.00%	4 10.00%	6 13.33%	25 29.07%	5 8.62%	18 32.14%	8 12.90%	4 22.22%	99 15.16%
Poor	1 2.04%	1 0.79%	6 9.68%	11 22.00%	2 5.00%	4 8.89%	28 32.56%	2 3.45%	20 35.71%	3 4.84%	4 22.22%	82 12.56%
Did Not Respond	0 0.00%	0 0.00%	0 0.00%	2 4.00%	0 0.00%	2 4.44%	2 2.33%	1 1.72%	0 0.00%	0 0.00%	1 5.56%	8 1.23%
No Opinion	1 2.04%	0 0.00%	0 0.00%	2 4.00%	0 0.00%	0 0.00%	3 3.49%	0 0.00%	0 0.00%	0 0.00%	0 0.00%	6 0.92%



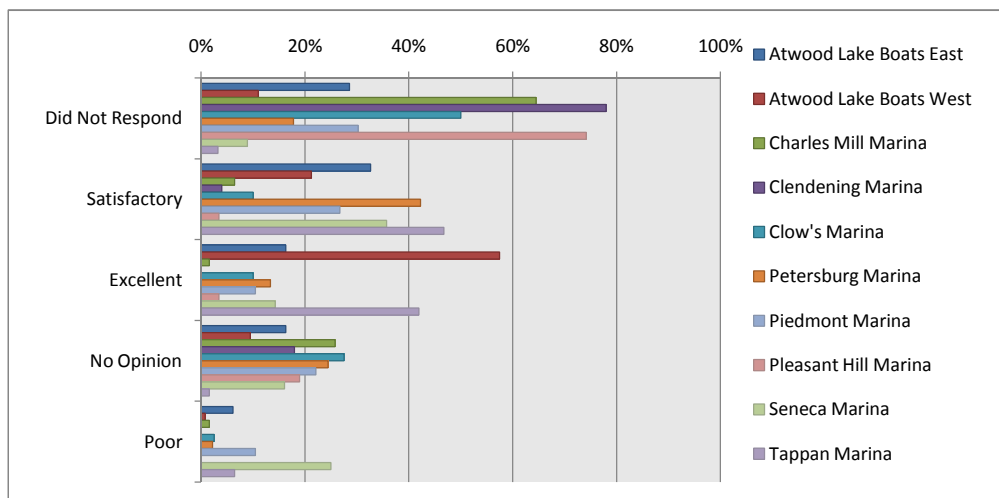
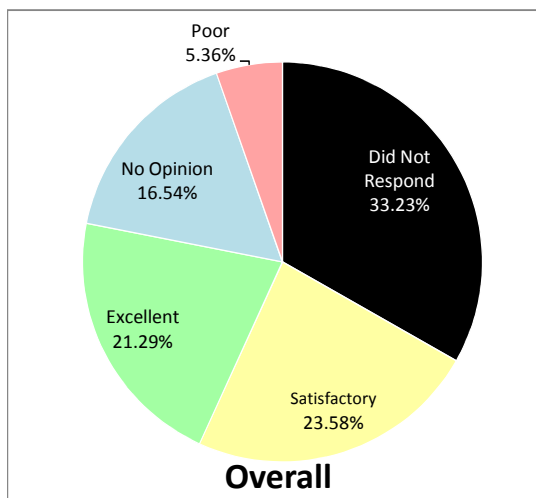
**Q14. Would you recommend your marina to others?**

	Atwood Lake Boats East	Atwood Lake Boats West	Charles Mill Marina	Clendening Marina	Clow's Marina	Petersburg Marina	Piedmont Marina	Pleasant Hill Marina	Seneca Marina	Tappan Marina	Unknown	Overall
Yes	48 97.96%	116 91.34%	49 79.03%	29 58.00%	36 90.00%	36 80.00%	30 34.88%	51 87.93%	24 42.86%	53 85.48%	10 55.56%	482 73.81%
No	1 2.04%	10 7.87%	10 16.13%	17 34.00%	3 7.50%	8 17.78%	45 52.33%	6 10.34%	25 44.64%	7 11.29%	6 33.33%	138 21.13%
Did Not Respond	0 0.00%	1 0.79%	2 3.23%	3 6.00%	1 2.50%	0 0.00%	8 9.30%	1 1.72%	5 8.93%	2 3.23%	2 11.11%	25 3.83%
Other	0 0.00%	0 0.00%	1 1.61%	1 2.00%	0 0.00%	1 2.22%	3 3.49%	0 0.00%	2 3.57%	0 0.00%	0 0.00%	8 1.23%



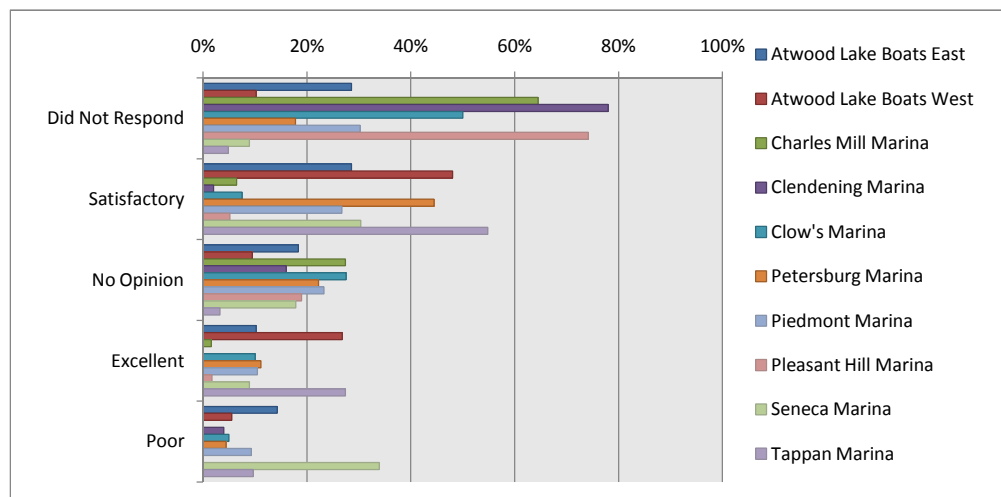
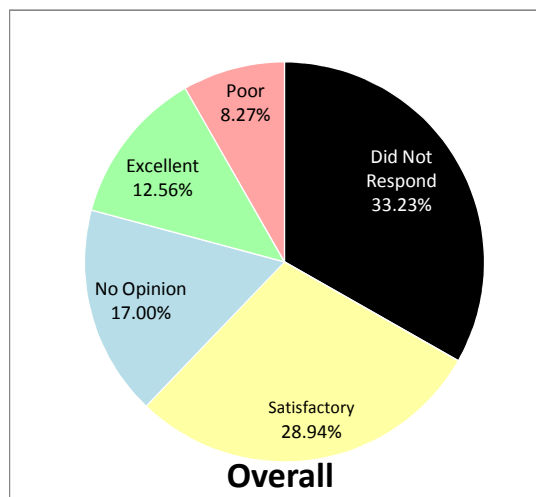
**Q15. How would you rate the following food services (if applicable)?**

Food Quality	Atwood Lake Boats East		Atwood Lake Boats West		Charles Mill Marina		Clendening Marina		Clow's Marina		Petersburg Marina		Piedmont Marina		Pleasant Hill Marina		Seneca Marina		Tappan Marina		Unknown		Overall	
Did Not Respond	14	28.57%	14	11.02%	40	64.52%	39	78.00%	20	50.00%	8	17.78%	26	30.23%	43	74.14%	5	8.93%	2	3.23%	6	33.33%	217	33.23%
Satisfactory	16	32.65%	27	21.26%	4	6.45%	2	4.00%	4	10.00%	19	42.22%	23	26.74%	2	3.45%	20	35.71%	29	46.77%	8	44.44%	154	23.58%
Excellent	8	16.33%	73	57.48%	1	1.61%	0	0.00%	4	10.00%	6	13.33%	9	10.47%	2	3.45%	8	14.29%	26	41.94%	2	11.11%	139	21.29%
No Opinion	8	16.33%	12	9.45%	16	25.81%	9	18.00%	11	27.50%	11	24.44%	19	22.09%	11	18.97%	9	16.07%	1	1.61%	1	5.56%	108	16.54%
Poor	3	6.12%	1	0.79%	1	1.61%	0	0.00%	1	2.50%	1	2.22%	9	10.47%	0	0.00%	14	25.00%	4	6.45%	1	5.56%	35	5.36%



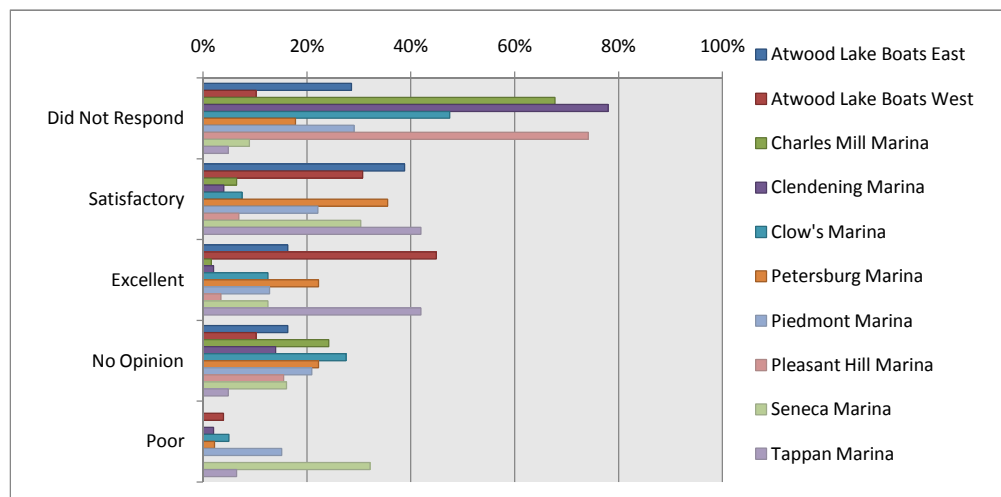
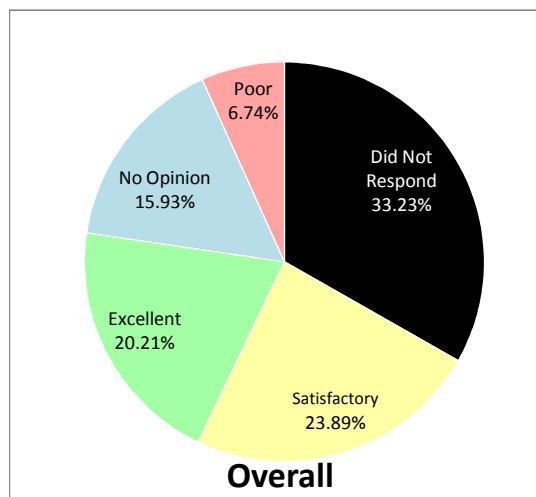
Dockers - Overall Summary

Food Value/Prices	Atwood Lake Boats East		Atwood Lake Boats West		Charles Mill Marina		Clendening Marina		Clow's Marina		Petersburg Marina		Piedmont Marina		Pleasant Hill Marina		Seneca Marina		Tappan Marina		Unknown		Overall	
	Count	Percentage	Count	Percentage	Count	Percentage	Count	Percentage	Count	Percentage	Count	Percentage	Count	Percentage	Count	Percentage	Count	Percentage	Count	Percentage	Count	Percentage	Count	Percentage
Did Not Respond	14	28.57%	13	10.24%	40	64.52%	39	78.00%	20	50.00%	8	17.78%	26	30.23%	43	74.14%	5	8.93%	3	4.84%	6	33.33%	217	33.23%
Satisfactory	14	28.57%	61	48.03%	4	6.45%	1	2.00%	3	7.50%	20	44.44%	23	26.74%	3	5.17%	17	30.36%	34	54.84%	9	50.00%	189	28.94%
No Opinion	9	18.37%	12	9.45%	17	27.42%	8	16.00%	11	27.50%	10	22.22%	20	23.26%	11	18.97%	10	17.86%	2	3.23%	1	5.56%	111	17.00%
Excellent	5	10.20%	34	26.77%	1	1.61%	0	0.00%	4	10.00%	5	11.11%	9	10.47%	1	1.72%	5	8.93%	17	27.42%	1	5.56%	82	12.56%
Poor	7	14.29%	7	5.51%	0	0.00%	2	4.00%	2	5.00%	2	4.44%	8	9.30%	0	0.00%	19	33.93%	6	9.68%	1	5.56%	54	8.27%

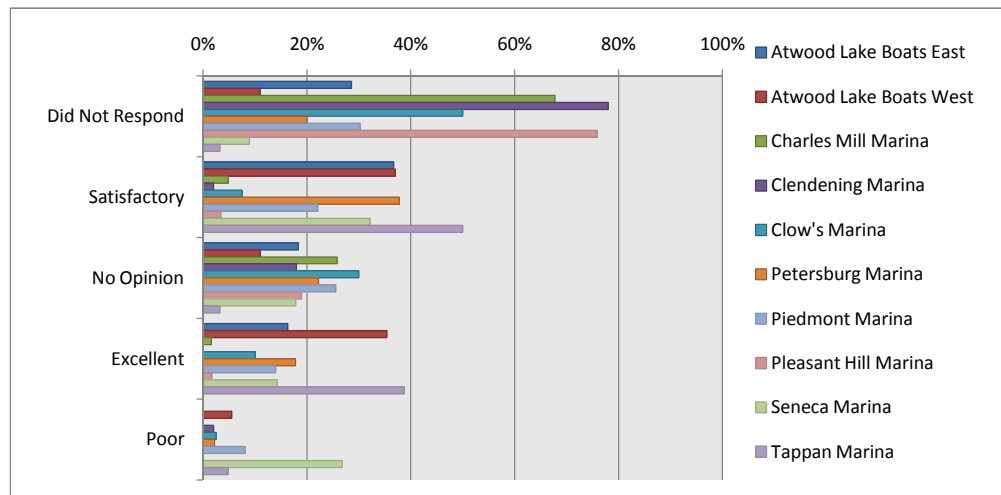
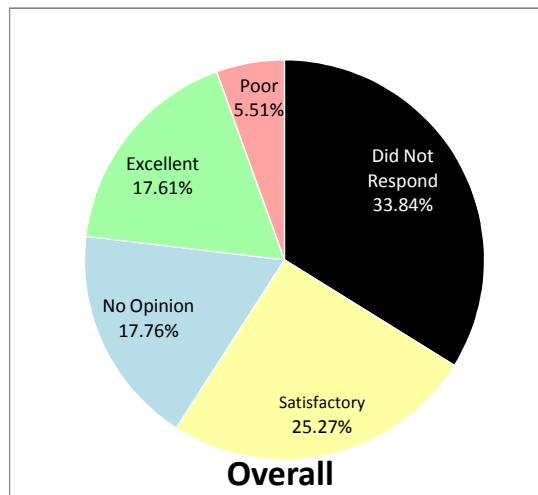


Dockers - Overall Summary

Service	Atwood Lake Boats East		Atwood Lake Boats West		Charles Mill Marina		Clendening Marina		Clow's Marina		Petersburg Marina		Piedmont Marina		Pleasant Hill Marina		Seneca Marina		Tappan Marina		Unknown		Overall	
	Count	Percentage	Count	Percentage	Count	Percentage	Count	Percentage	Count	Percentage	Count	Percentage	Count	Percentage	Count	Percentage	Count	Percentage	Count	Percentage	Count	Percentage	Count	Percentage
Did Not Respond	14	28.57%	13	10.24%	42	67.74%	39	78.00%	19	47.50%	8	17.78%	25	29.07%	43	74.14%	5	8.93%	3	4.84%	6	33.33%	217	33.23%
Satisfactory	19	38.78%	39	30.71%	4	6.45%	2	4.00%	3	7.50%	16	35.56%	19	22.09%	4	6.90%	17	30.36%	26	41.94%	7	38.89%	156	23.89%
Excellent	8	16.33%	57	44.88%	1	1.61%	1	2.00%	5	12.50%	10	22.22%	11	12.79%	2	3.45%	7	12.50%	26	41.94%	4	22.22%	132	20.21%
No Opinion	8	16.33%	13	10.24%	15	24.19%	7	14.00%	11	27.50%	10	22.22%	18	20.93%	9	15.52%	9	16.07%	3	4.84%	1	5.56%	104	15.93%
Poor	0	0.00%	5	3.94%	0	0.00%	1	2.00%	2	5.00%	1	2.22%	13	15.12%	0	0.00%	18	32.14%	4	6.45%	0	0.00%	44	6.74%



Food Preparation Timeliness	Atwood Lake Boats East		Atwood Lake Boats West		Charles Mill Marina		Clendening Marina		Clow's Marina		Petersburg Marina		Piedmont Marina		Pleasant Hill Marina		Seneca Marina		Tappan Marina		Unknown		Overall	
	Count	Percentage	Count	Percentage	Count	Percentage	Count	Percentage	Count	Percentage	Count	Percentage	Count	Percentage	Count	Percentage	Count	Percentage	Count	Percentage	Count	Percentage	Count	Percentage
Did Not Respond	14	28.57%	14	11.02%	42	67.74%	39	78.00%	20	50.00%	9	20.00%	26	30.23%	44	75.86%	5	8.93%	2	3.23%	6	33.33%	221	33.84%
Satisfactory	18	36.73%	47	37.01%	3	4.84%	1	2.00%	3	7.50%	17	37.78%	19	22.09%	2	3.45%	18	32.14%	31	50.00%	6	33.33%	165	25.27%
No Opinion	9	18.37%	14	11.02%	16	25.81%	9	18.00%	12	30.00%	10	22.22%	22	25.58%	11	18.97%	10	17.86%	2	3.23%	1	5.56%	116	17.76%
Excellent	8	16.33%	45	35.43%	1	1.61%	0	0.00%	4	10.00%	8	17.78%	12	13.95%	1	1.72%	8	14.29%	24	38.71%	4	22.22%	115	17.61%
Poor	0	0.00%	7	5.51%	0	0.00%	1	2.00%	1	2.50%	1	2.22%	7	8.14%	0	0.00%	15	26.79%	3	4.84%	1	5.56%	36	5.51%



**Q16. What improvements and/or new facilities would you like to see in the future?**

	Atwood Lake Boats East	Atwood Lake Boats West	Charles Mill Marina	Clendening Marina	Clow's Marina	Petersburg Marina	Piedmont Marina	Pleasant Hill Marina	Seneca Marina	Tappan Marina	Unknown	Overall
Responded	49 100.00%	127 100.00%	62 100.00%	50 100.00%	40 100.00%	45 100.00%	86 100.00%	57 98.28%	56 100.00%	60 96.77%	18 100.00%	650 99.54%
Did Not Respond	0 0.00%	0 0.00%	0 0.00%	0 0.00%	0 0.00%	0 0.00%	0 0.00%	1 1.72%	0 0.00%	2 3.23%	0 0.00%	3 0.46%

**Q17. Please tell us what the marina is doing right so that it can continue.**

	Atwood Lake Boats East	Atwood Lake Boats West	Charles Mill Marina	Clendening Marina	Clow's Marina	Petersburg Marina	Piedmont Marina	Pleasant Hill Marina	Seneca Marina	Tappan Marina	Unknown	Overall
Responded	48 97.96%	126 99.21%	62 100.00%	50 100.00%	40 100.00%	45 100.00%	86 100.00%	57 98.28%	56 100.00%	60 96.77%	18 100.00%	648 99.23%
Did Not Respond	1 2.04%	1 0.79%	0 0.00%	0 0.00%	0 0.00%	0 0.00%	0 0.00%	1 1.72%	0 0.00%	2 3.23%	0 0.00%	5 0.77%

**Q18. Would you like a MWCD staff member to contact you for further discussion?**

	Atwood Lake Boats East	Atwood Lake Boats West	Charles Mill Marina	Clendening Marina	Clow's Marina	Petersburg Marina	Piedmont Marina	Pleasant Hill Marina	Seneca Marina	Tappan Marina	Unknown	Overall
Did Not Respond	44 89.80%	116 91.34%	56 90.32%	41 82.00%	34 85.00%	34 75.56%	63 73.26%	49 84.48%	43 76.79%	54 87.10%	13 72.22%	547 83.77%
Yes	3 6.12%	7 5.51%	2 3.23%	6 12.00%	5 12.50%	11 24.44%	21 24.42%	6 10.34%	10 17.86%	5 8.06%	4 22.22%	80 12.25%
No	2 4.08%	4 3.15%	4 6.45%	3 6.00%	1 2.50%	0 0.00%	2 2.33%	3 5.17%	3 5.36%	3 4.84%	1 5.56%	26 3.98%